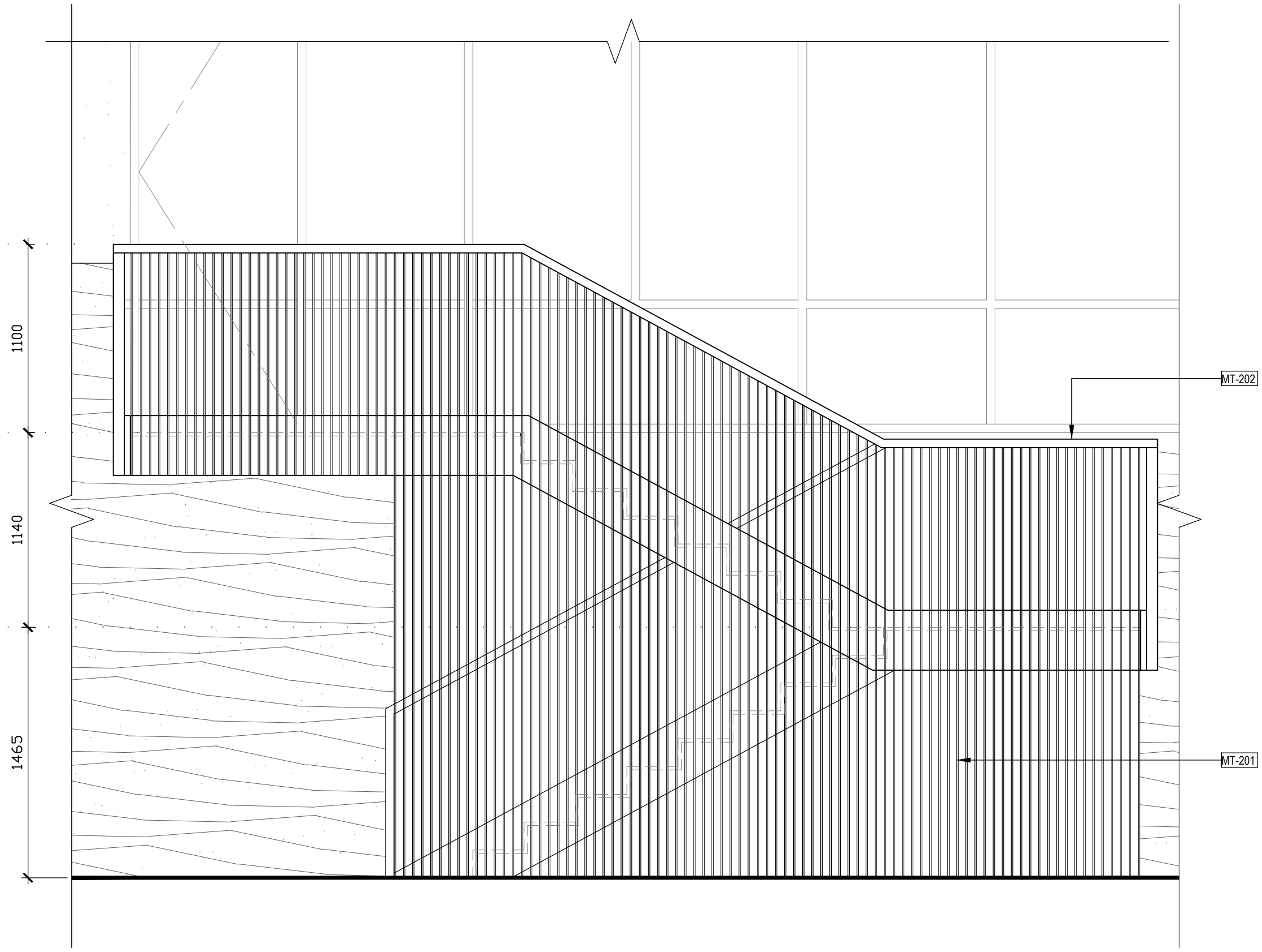
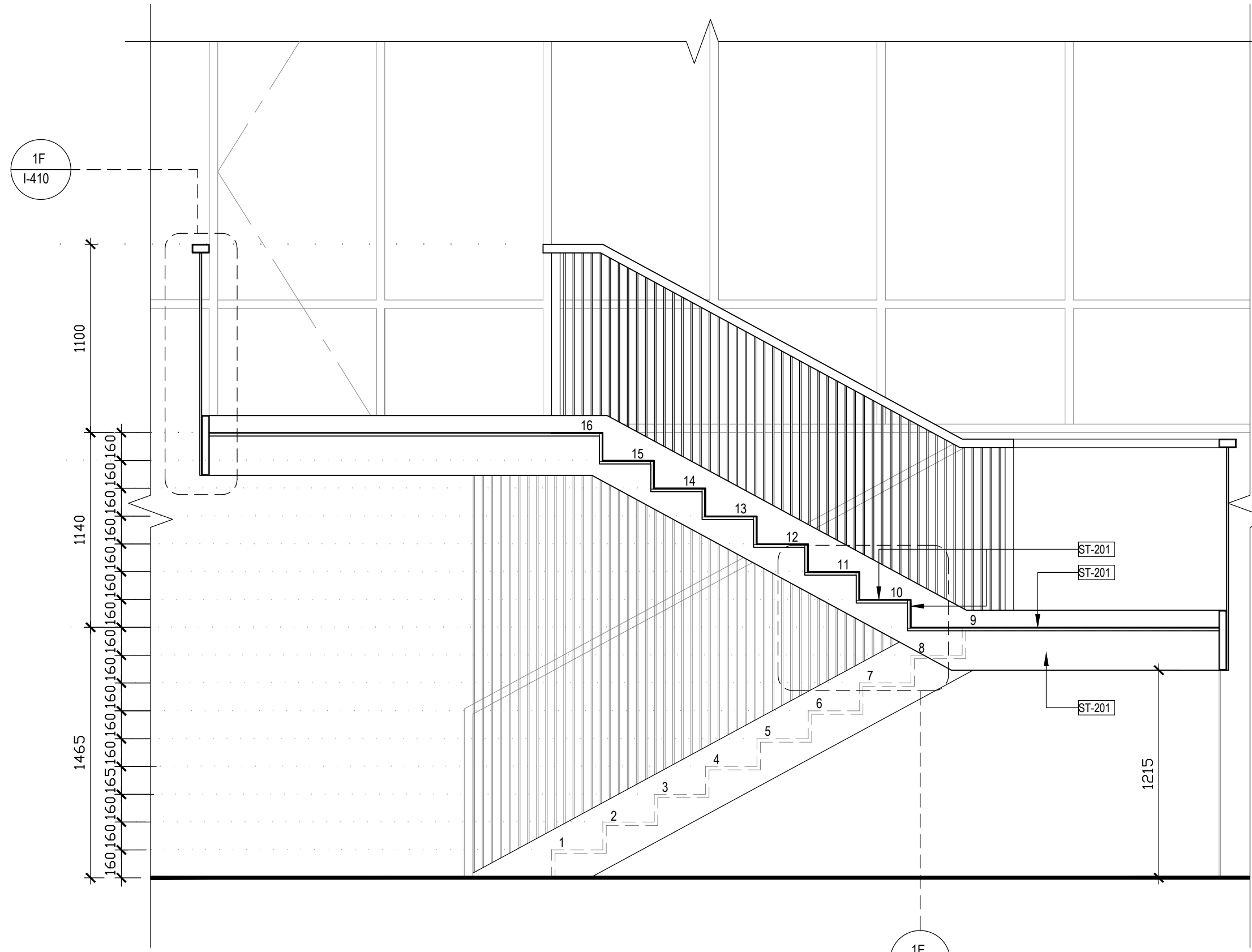


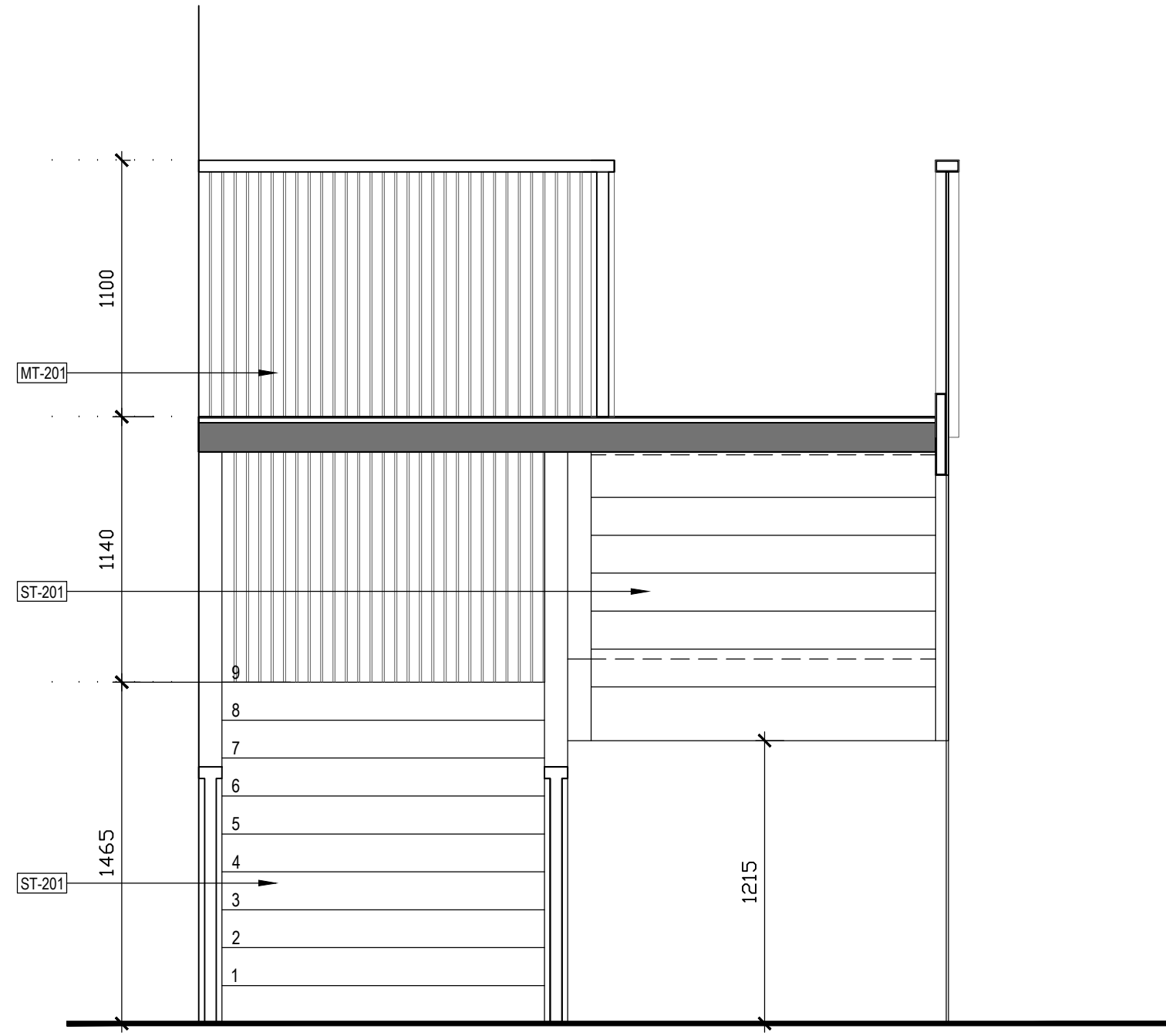
1B ELEVATION
1:410 SCALE 1:25



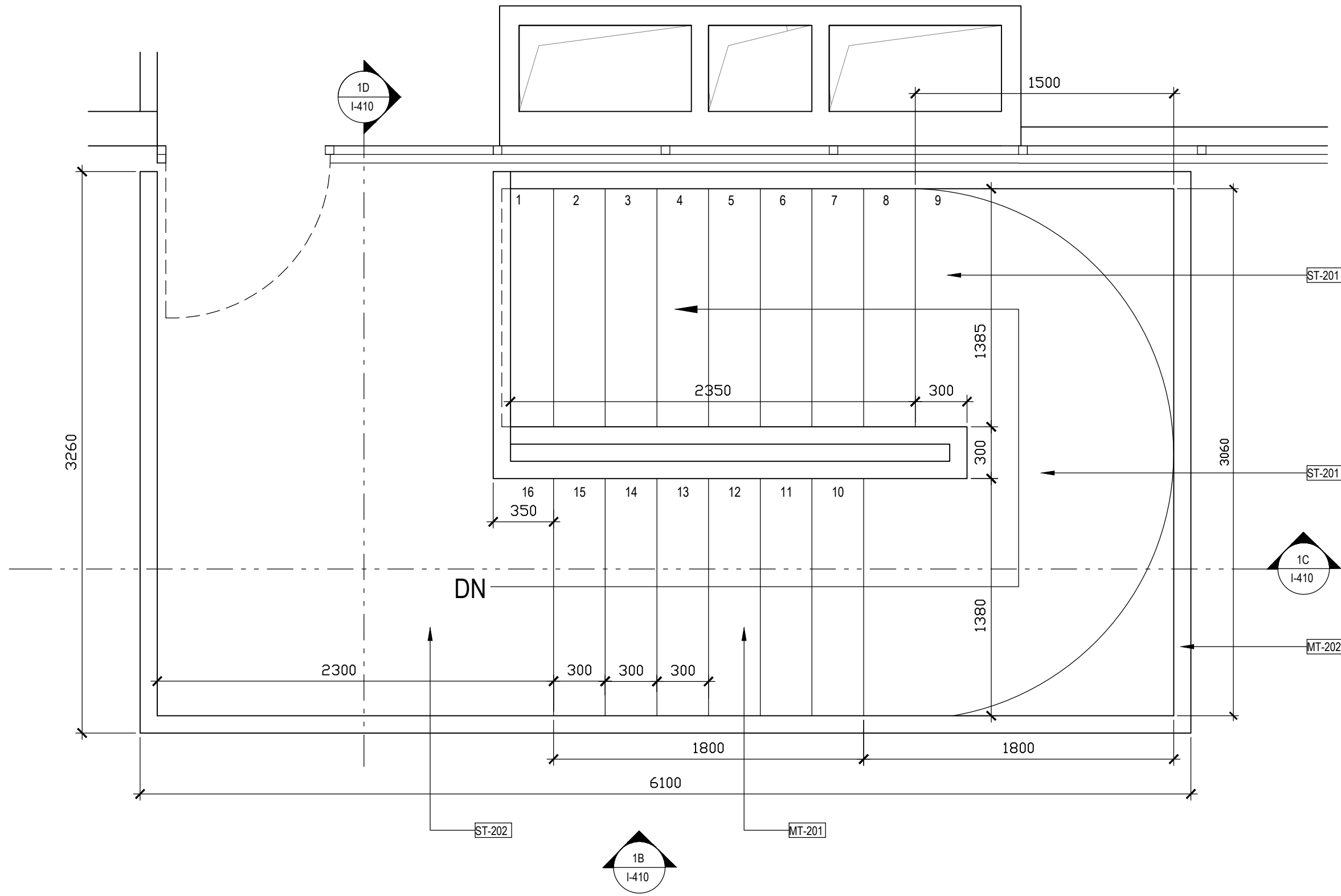
1C SECTION
1:410 SCALE 1:25



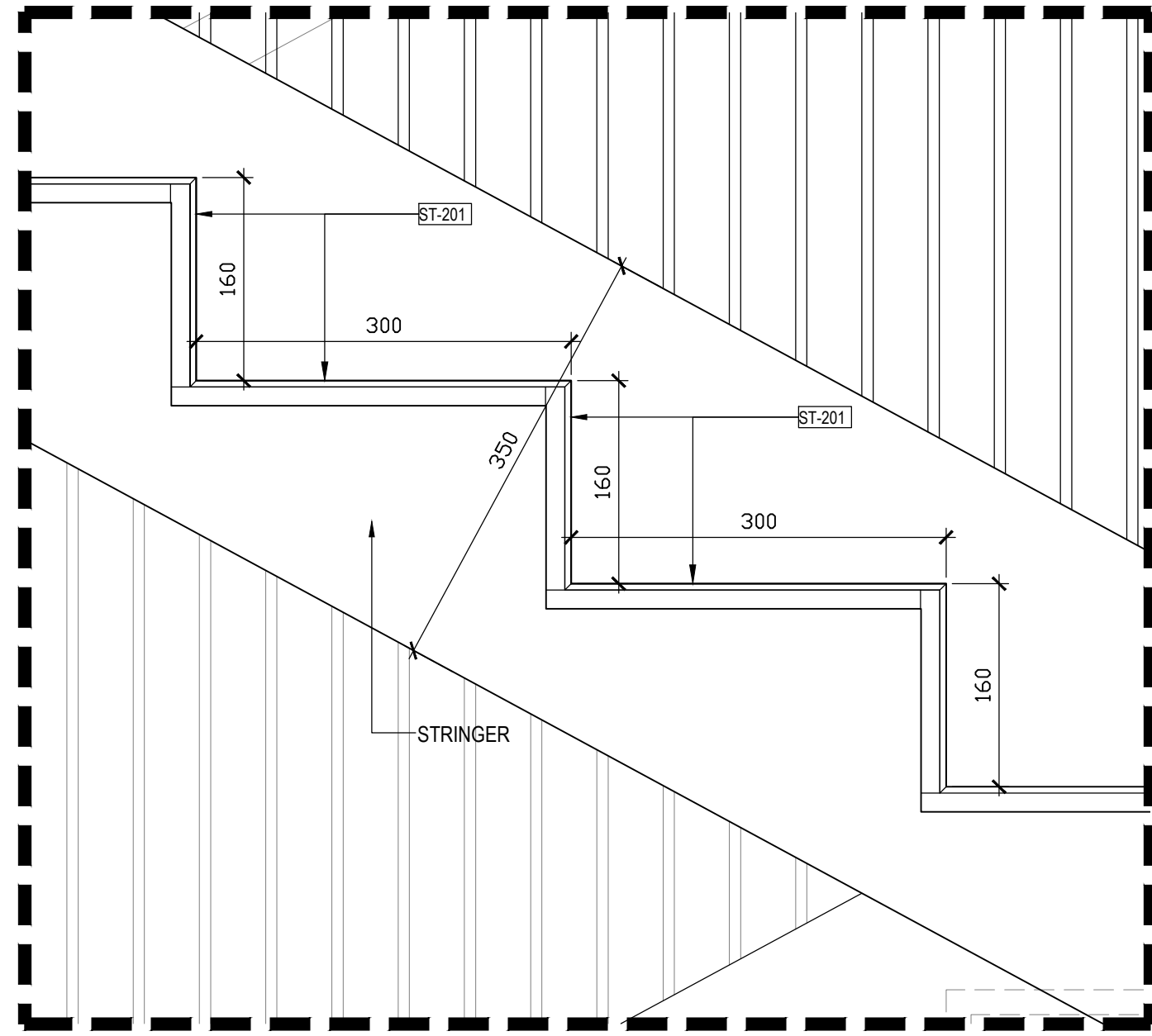
1D SECTIONAL ELEVATION
1:410 SCALE 1:35



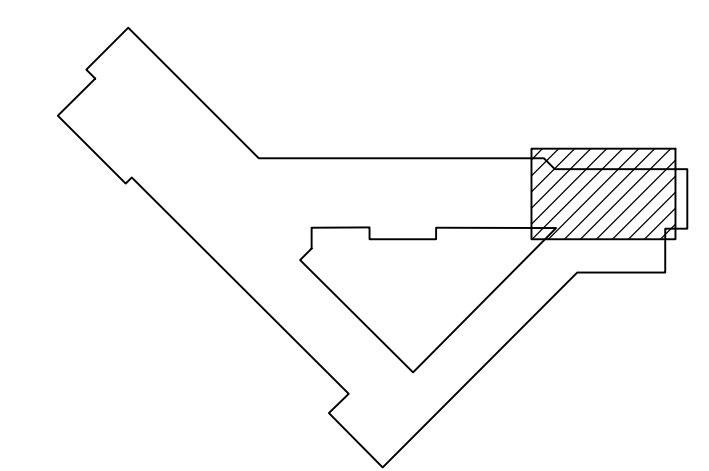
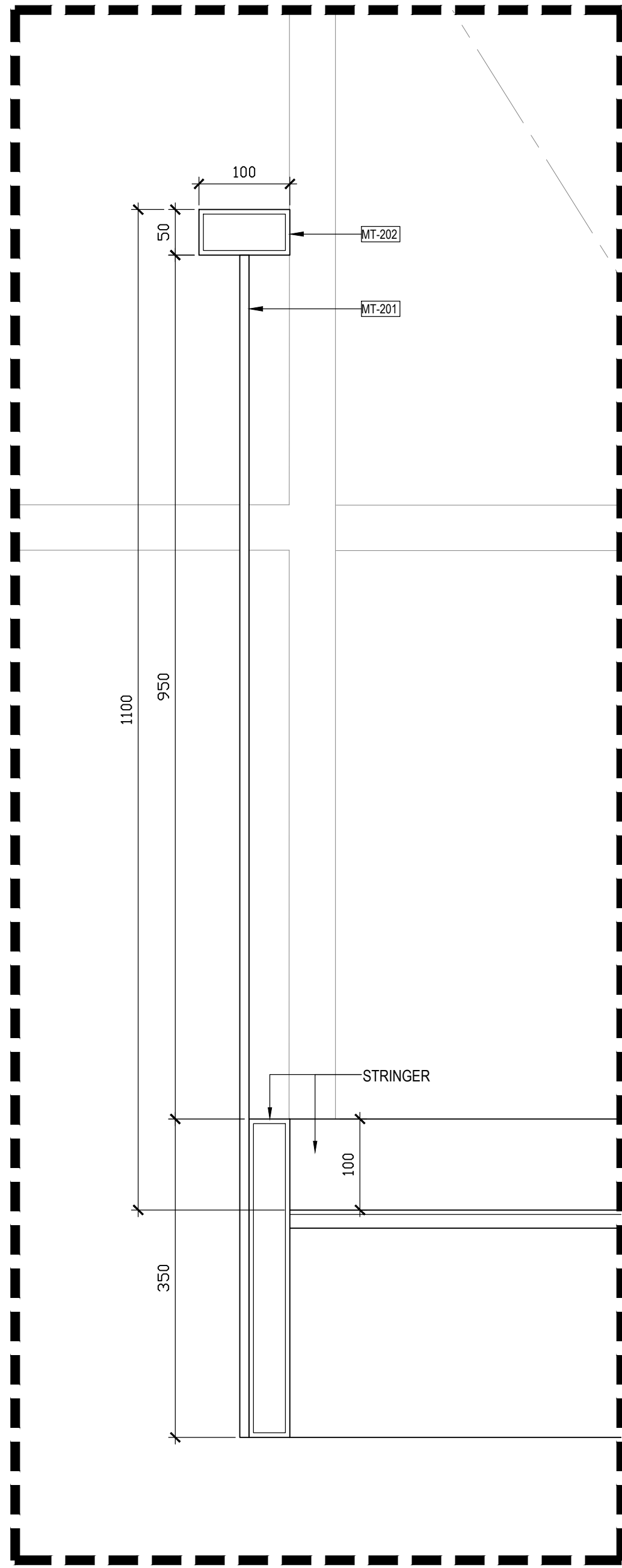
1A PLAN
1:410 SCALE 1:25



1E BLOW-UP DETAIL
1:410 SCALE 1:5



1F BLOW-UP DETAIL
1:410 SCALE 1:5



1. THIS DRAWING IS THE COPYRIGHT OF H+A AND MUST NOT BE REPRODUCED, COPIED OR USED WITHOUT THE BELOW CONSULTANT'S CONSENT.
2. DIMENSIONS ARE NOT TO BE SCALED FROM THIS DRAWING. ALL DIMENSIONS ARE IN MILLIMETERS AND LEVELS IN METERS UNLESS NOTED OTHERWISE.
3. ANY DISCREPANCIES, EITHER BETWEEN WRITTEN DIMENSIONS AND SITE DIMENSIONS OR WITHIN THESE DRAWINGS SHOULD BE BROUGHT TO THE IMMEDIATE ATTENTION OF THE ARCHITECT BEFORE EXECUTING THE WORKS.
4. THIS DRAWING IS TO BE READ IN CONJUNCTION WITH ALL OTHER DOCUMENTATION FORMING THE CONSTRUCTION CONTRACT.
5. ALL EXISTING DIMENSIONS (LEVELS ETC. INDICATED ON DRAWINGS ARE TO BE VERIFIED ON SITE.
6. CONTRACTOR TO SUBMIT COORDINATED SHOP DRAWINGS FOR APPROVAL AS REQUIRED PRIOR TO COMMENCEMENT OF WORKS AT SITE.

3	ISSUED FOR 100% DETAILED DESIGN	24.09.21	
A	ISSUED FOR 100% DETAILED DESIGN	20.09.21	
REVISION	DESCRIPTION	DATE	

OWNER / TENANT:
RAK HOSPITALITY HOLDING LLC
7th Floor RAKBANK Head Office
Jumeira - Ras Al Khaima UAE
PO Box 86000
www.rakhospitalityholding.com

H+A
Tamem House, Level 16,
Office 1607, Barsha Heights
Dubai, UAE
www.h-a-global



SHERATON GRAND TBILISI METECHI
PALACE - MEETINGS BY ATI

MEETING ROOM
STAIRCASE DETAILS

DRAWN	CHECKED	DATE	APPROVED	DL
SCALE	As indicated	DATE	24.09.2021	PROJ. No. 9020

DRAWING No.	REV
I-410	B